

Workspace: Ground Floor

OPEN OFFICE

4' x 6' WKST: 42
 30" x 60" WKST: 192
 120° WKST: 32

Total: 266

MEETING ROOMS

2-3 Person: 12
 4-6 Person: 2
 8-10 Person: 3
 12-20 Person: 1

Total: 18

COLLABORATION

Total: 13

DINING

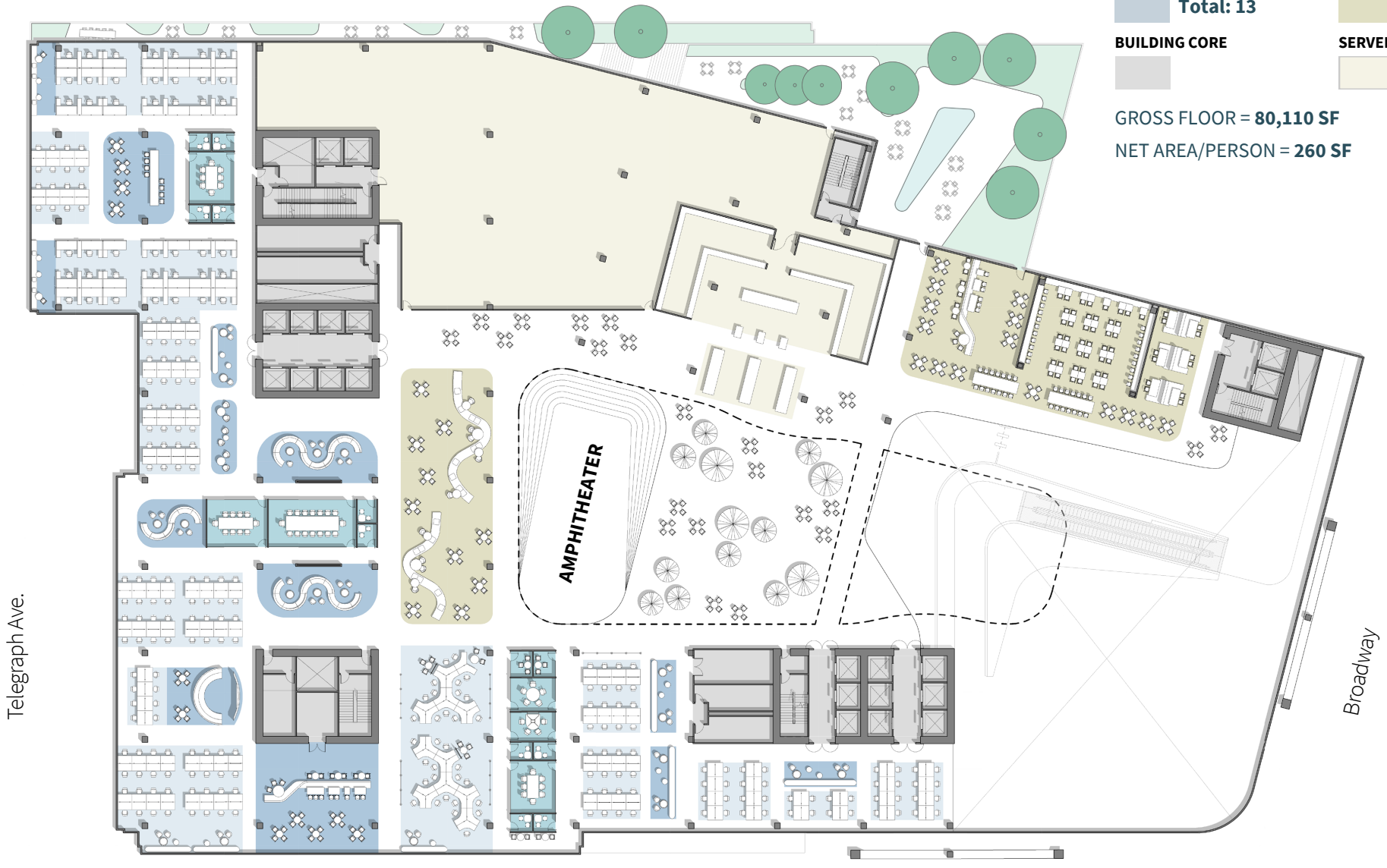
350 Seats

BUILDING CORE
SERVERY

15,280SF

GROSS FLOOR = **80,110 SF**

NET AREA/PERSON = **260 SF**



Telegraph Ave.

Broadway

21st St.